

BIDEMATIC LEFT-SIDE INSTALLATION GUIDE

IMPORTANT: Perform this adjustment prior to toilet installation to ensure proper operation and prevent potential leaks.

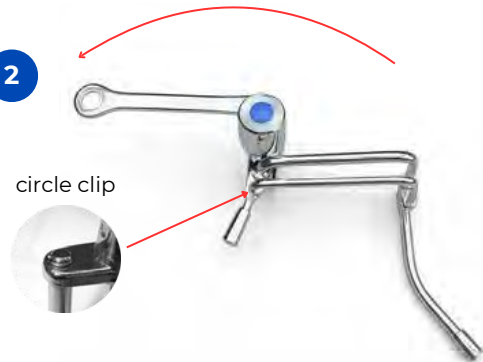
1



STARTING POSITION:

Place the mechanism on a flat surface in its factory configuration.

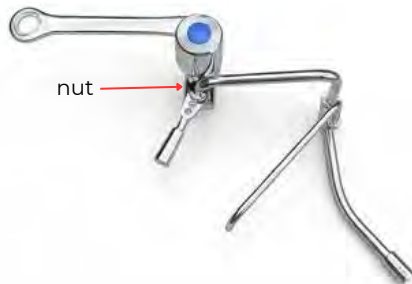
2



UNLOCKING:

Rotate the support arm 180° and remove the safety retainer (clip).

3



DETACHMENT:

Remove the "U" rod from the lever handle and unscrew the nut shown above.

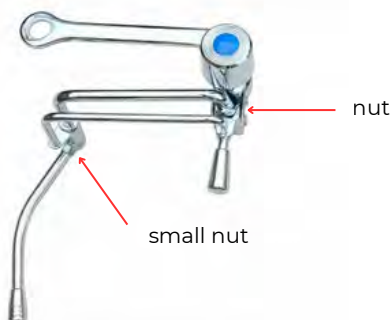
4



REVERSAL:

Rotate the central block 180° and reinsert the "U" rod into the lever hole.

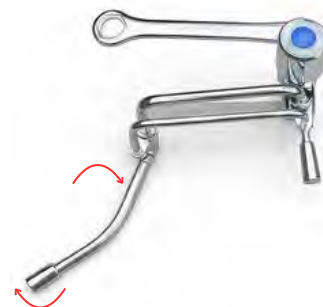
5



LOCKING:

Fasten the nut again and insert the safety retainer, ensuring the clip snaps firmly into its groove. Loosen the small nut that secures the curved tube so that it can be turned..

6



FINAL ADJUSTMENT:

Turn the curved spout through 180° and tighten the small nut. Then, rotate the shower head through 180° to its final operating position.